

THE PAPER BAG PRINCESS

Based on the story by **Robert Munsch**
Adapted by **Alissa Watson**



SOCIAL STORY

SPONSORED BY



MEDIA SPONSOR



TOUR SPONSORED BY



PRAIRIE**THEATRE**EXCHANGE

PTE.mb.ca

Illustration: The Paper Bag Princess, copyright © 1980 Bob Munsch Enterprises Ltd. (text); © 1980 Michael Martchenko (art); published by Annick Press Ltd.
Based on: The Paper Bag Princess, copyright © 1980 Bob Munsch Enterprises Ltd. (text); © 1980 Michael Martchenko (art); published by Annick Press Ltd.

Welcome to Prairie Theatre Exchange (PTE)

We're excited for you to see **The Paper Bag Princess** in our theatre.

Here's what you can expect when you come and see the show.



After you take the elevator up to the third floor of Portage Place, you'll see the **entrance** to Prairie Theatre Exchange.



Go **past this** big, silver spacey-looking thing to the **sign**, and then **follow the arrow** on the sign.

This is what you'll see when you walk toward Prairie Theatre Exchange.



You may already have your tickets. If you don't, you'll stop and pick them up at the **Box Office**. This is the Box Office.



Then a volunteer will scan your ticket and you can enter the lobby.

This is the lobby, where you'll wait until it's time to sit down in the theatre for the show.



There will be lots of other people in the lobby. Some people might be moving around. Some people might be waiting in lines or sitting down.



You might want to use the **washroom** or have a **drink** of water before the show. There are washrooms and a water fountain close to the lobby doors.



There's a place in the lobby where you can take your picture.

When it's **time to go into the theatre**, people called ushers will open the doors. You may have to wait in line to get into the theatre. An usher will offer you a program and another usher can help you find your seat.



These are the doors to go into the theatre.

This is what the theatre looks like.



There are three **actors** in the show. They each play more than one part – you can tell when they change their costumes and voices that they're playing a different character in the story.

Sometimes they will raise their voices during the performance. They will pretend to fight. One will pretend to be a scary dragon. There is a siren twice during the show, just a few minutes apart. There's also music playing at different parts.

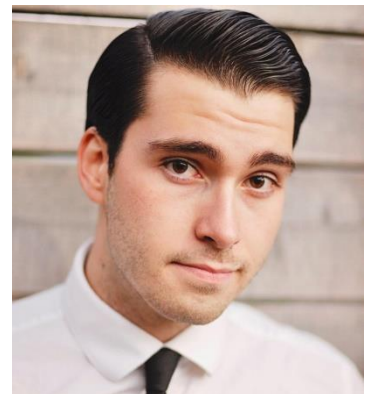
Dutchess plays Elizabeth and Ronald's mom



Johanna plays the Dragon, the Fairy Godmother, Sir Puffy the Pompous and Marg (Elizabeth's second oldest sister)



Chris plays Prince Ronald, Elizabeth's Dad (the King), Julia and Bethany (Elizabeth's other older sisters. Bethany is a puppet) and the bird (a puppet).



During the Show

If you need to go to the **bathroom or take a break** during the show, please feel free to do so. An usher can help you exit and re-enter the theatre.

This is our Lounge. For the Relaxed Performance on January 2 at 3 pm, it's been set up as a **quiet space**. It will be available to you **if you need to take a break or have some quiet time**. You can ask an usher or the House Manager, Deb, to show you how to get here.



This is Deb

You can come back into the theatre whenever you like, but **please try to be quiet** when you return.

When the performance is over, you can clap to show the actors that you enjoyed the show.



After the clapping, the audience will leave the theatre and exit into the lobby.

Thank you for coming to see ***The Paper Bag Princess***.
We hope you'll come back again soon!

The people who made this show:

Director & Adaptation:	Alissa Watson
Set and Costume Designer:	Linda Beech
Lighting Designer:	Larry Isacoff
Sound Designer & Music:	Christine Fellows
Stage Manager:	Katie Hoppa

Featuring:

Johanna Burdon	Dragon
Dutchess Cayetano	Elizabeth
Chris Sousa	Ronald

Based on the story by Robert Munsch

Production photos by Leif Norman