



PTE

2021/2022

A DANCE TO THE END OF THE WORLD

— BY THOMAS MORGAN JONES —

PRAIRIE THEATRE EXCHANGE

ONLINE PERFORMANCE

March 14 - April 10 / 2022

SPONSORED BY



MEDIA SPONSOR

Winnipeg Free Press

PTE.mb.ca

Proud sponsors of
**A Dance to the End
of the World**

Employee Benefit Solutions



Work Life Wonderful.
johnstongroup.ca



PRAIRIE THEATRE EXCHANGE IS PROUD TO PRESENT

**A DANCE
TO THE END OF THE
WORLD**

— BY THOMAS MORGAN JONES —

DIRECTED BY **Soheil Parsa**

SOUND DESIGN **jaymez**

DRAMATURGY **Brian Drader**

WORKSHOP COORDINATOR **Matthew Paris-Irvine**

ILLUSTRATIONS BY **Josh Murdock**

FEATURING:

Hera Nalam *GIRL*

Donna Yamamoto *LADYBIRD*

Ray Strachan *FATHER*

Rodrigo Beilfuss *PRIEST*

Brian Drader *NARRATOR*

RUN TIME: 55 MINUTES

Developed with the support of the Manitoba Association of Playwrights

We invite you to join us in recognizing that we are on Treaty 1 Territory, the traditional territory of the Anishinaabeg, Cree, Dakota and Métis nations, and the home of many other Indigenous nations and peoples. As a part of our journey to reconciliation, PTE promises to bring Indigenous stories and voices to the PTE stage every season.

Maximum
benefit.

 **Chambers Plan**
Employee Benefits


CINUP

 **BEST
MANAGED
COMPANIES**
Platinum member

A NOTE FROM THE DRAMATURG

Many of you reading this may not know what a dramaturg is. The very one-size-fits-one nature of the craft makes it hard to define, and we haven't even settled on how to pronounce or spell it (Dramaturg with a hard g, or Dramaturge with a soft g ... both are acceptable, and both are used). Our country's version of dramaturgy is most commonly understood to mean someone who works directly with the playwright, helping them to develop their play from draft to draft through conversations and feedback and questions, while advising on the development process as a whole. A common denominator of all dramaturgical practice: every conversation, every offer of material, every draft ... the dramaturg must believe in the world and the story as much as the playwright. It has to be as real for me as it is for the story teller, if I'm to be of any service to them.

What a deep pleasure it has been to believe in Mr. Thomas Morgan Jones's story, and to accompany him on his journey with this play. And a journey it has been. The first draft arrived in my inbox three years ago, and began as a piece intended to embrace a highly physical style of theatre. Several drafts and a workshop later, the pandemic hit. Development continued, but with no idea of where it might land. And here we are. An audio drama accompanied by a digital book of illustrations. The process epitomized, for me, the journey we as a theatre community have all been on over these last two years. Adapt, adapt, adapt! But through that process of adaptation, we've kept digging for the truth of our stories and how that truth can best be served with the tools we have to work with.

I can't say for certain, because we don't know what we don't know, but I deeply suspect that adapting Thomas's play to an audio medium has revealed an intimacy and depth to this story that may have remained hidden to us if we hadn't chosen to meet the challenges of our time with the tools we have to work with. How interesting, given that it's a story that grapples with the challenges of our time. Theme meets form.

What is a dramaturg? The kind of person who gets excited about that.

Enjoy.

BRIAN DRADER

THIS PLAY WAS WORKSHOPPED IN DEVELOPMENT IN 2019

Participants: Soheil Parsa (director), Eric Blais, Brian Drader, Alicia Johnston, Hera Nalam, Ray Strachan, jaymez, Thomas Morgan Jones, Hazel Venzon

MEET THE ARTISTS



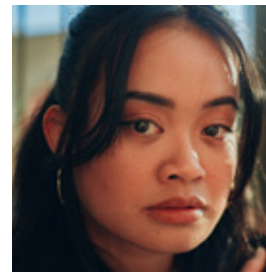
Rodrigo Beilfuss PRIEST

Born and raised in Brazil, Rodrigo first moved to Winnipeg in 2001 as an exchange student. Here, Rodrigo was a founding member of Theatre by the River, and he has directed and acted in several productions at various local theatres. Rodrigo spent four years in Ontario with the Stratford Festival, and then relocated back to Winnipeg to be the Artistic Director of Shakespeare in the Ruins (SIR) in the Fall of 2019.



Brian Drader NARRATOR/DRAMATURG

Brian Drader has acted in over seventy professional theatre productions across Canada, as well as numerous films, television projects, and radio dramas. His plays have been produced in Canada, the United States, and Europe. Awards for his writing include the Herman Voaden National Playwriting Award, the Philadelphia Brick Playhouse New Play Award, and the Lambda Literary Award for Drama (USA), as well as nominations for the Governor General's Award and the McNally Robinson Book of the Year. Brian served as the Director of Playwriting at the National Theatre School of Canada in Montreal from 2004 to 2017 and is now the Executive Director of the Manitoba Association of Playwrights.



Hera Nalam GIRL

Born and raised in the Philippines, Hera Nalam first came to Canada in 2011 when she was 16 years of age. In the last 10 years in Canada, she has immersed herself in the local creative platforms from music, theatre, film and fashion. Today, she is a Winnipeg based actress/singer-songwriter who loves to collaborate with artists from all disciplines through her interdisciplinary skills. She was last seen on screen on Winnipeg's hit rom-com of 2020, screening in over 8 theatres across Canada, *I Propose We Never See Each Other Again After Tonight* when she debuted on film as the lead actress.

MEET THE ARTISTS



Ray Strachan FATHER

Ray Strachan is a Theatre Artist of Grenadian and Filipino descent, born and based in Winnipeg. He has trained with the Black Hole Theatre Company and at the Banff Centre, and has performed on numerous Canadian stages, as well as working in TV/Film. Most recently in Winnipeg, Ray performed in Ismaila Alfa's *VOICE* on the PTE stage, and as Martin Luther King Jr. in *The Mountaintop* for Royal Manitoba Theatre Centre, reprising the role for Shadow Theatre in Edmonton in January of this year. Ray is a founding member of the ANANSI School for the Performing Arts, and hopes that one day our Stages and Theatre Companies will truly celebrate Winnipeg's rich diversity.



Donna Yamamoto LADYBIRD

Donna is an award-winning actor, creator and voice-over artist. She is thrilled to be working with Prairie Theatre Exchange as a performer for the first time and bringing the words of Thomas Morgan Jones to life. Donna recently retired after ten wonderful years as the Producing Artistic Director of vAct (Vancouver Asian Canadian Theatre). She is cast in the role of Hanako in Robert Lepage's play *Seven Streams of the River Ota*, which will resume touring this summer.



Thomas Morgan Jones PLAYWRIGHT

Thomas's plays include: *My Neighbour, My Saviour*, Cia Enviezada, Brazil; *The Forest in My Room*, Carousel Players, Neptune Theatre; *The Old Man and the River* with Lynda Hill, Theatre Direct, Wee Festival; *Arianna*, Charlottetown Festival; *You Play Beautifully*, *A Sunday Affair* with Gabrielle Houle and Richard Lee, *The Snow Queen* (Andersen adaptation), *A Christmas Carol* (Dickens adaptation), *Gretel and Hansel* (Grimm adaptation), Theatre New Brunswick; *Affliction*, Rhubarb Festival; and others.



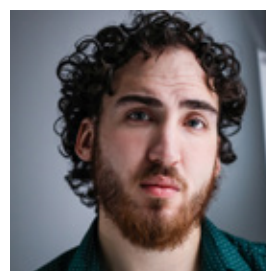
Soheil Parsa DIRECTOR

Soheil Parsa is the co-founder and former artistic director of Modern Times Stage Company in Toronto and has directed over forty productions for the company since its inception in 1989. His work has been recognized with numerous awards and nominations. In 2021, Soheil received the Barbara Hamilton Memorial Award and the Canadian Association for Theatre Research Honorary Member Award for his unique contribution to Canadian theatre in the past thirty-two years.



jaymez SOUND DESIGNER

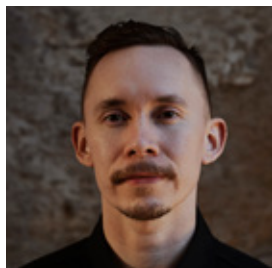
With a multi-faceted and distinct style, jaymez has worked in the visual art, dance, theatre and music communities. He has been the sound designer on multiple shows at PTE including *Prairie Nurse*, *The Third Colour*, and *Post Democracy* and for One Trunk Theatre's *Red Earth*. He was also the lighting designer for *Ghost Light*, *By Grand Central Station* and *VOICE*, and took on the role of Production Designer for *Exciting Consequences*. His designs have appeared in a number of international festivals, theatrical and dance productions and he has created lighting, video and sound designs for a wide range of companies, choreographers and musicians. His work has garnered him two Winnipeg Theatre Awards for outstanding design. He is also a member and sits on the board of directors of IATSE Local ADC659.



Matthew Paris-Irvine WORKSHOP COORDINATOR

Matthew Paris-Irvine is an emerging director, playwright, actor and designer of mixed Afro-Caribbean and Settler descent proudly from Winnipeg's North End, a cultural haven whose stories are begging to be told. Matthew was lucky enough to complete mentorships through Creative Manitoba and RMTC with Rodrigo Beifuss and Philip Akin. He is, and will always be, incredibly grateful to them for their kindness and humility. Recent Credits include, Directing: *The Show* (RMTC); *O(Phelia)* (ShakespeareFest); *Bastard*. (Staged Reading, FemFest); *Love's Labour's Lost* (Apprentice, University of Winnipeg); *Becoming Dr. Ruth* (Apprentice, WJT). He also has a cat. It has an attitude problem.

MEET THE ARTISTS



Josh Murdock ILLUSTRATIONS

Josh is an Indigenous tattoo artist from Fisher River Cree Nation, Manitoba. He currently works at Ink Noir tattoo studio in Winnipeg as a full-time tattoo artist. He is also multidisciplinary artist (tattooing, pen and ink, photography, live painting).

Instagram: @mrdck_ink (tattoo/art page)

SPONSORS & SUPPORTERS

RETURN TO THEATRE SPONSOR



CREATIVE CHAMPION



PRODUCTION SUPPORTERS



DIRECTING MENTORSHIP SPONSOR



EDUCATIONAL RESIDENCE SPONSOR



THE WAR BEING WAGED DIGITAL PRODUCTION SPONSOR



PTE PLAYWRIGHTS UNITS



COMPANY IN RESIDENCE SPONSOR



VOLUNTEER CORPS SPONSOR



ACCESS SERVICES



EXCLUSIVE PRINT MEDIA SPONSOR



MEDIA SPONSORS



OFFICIAL PRINTER



OFFICIAL DESIGNER



WINE TASTING SPONSOR



PAYROLL SERVICES PROVIDED BY



MEET THE PTE TEAM

PTE Administration:

Kathleen Day
BOX OFFICE REPRESENTATIVE

Deborah Gay-de Vries
FRONT-OF-HOUSE &
COVID COMPLIANCE MANAGER

Andrew Gehrs-Whyte
BOX OFFICE REPRESENTATIVE

Carman Johnston
DIRECTOR OF DEVELOPMENT

Thomas Morgan Jones
ARTISTIC DIRECTOR

Cherry Karpyschin
GENERAL MANAGER EMERITUS

Christine Kennedy
ACCOUNTANT

Lizabeth Kogan
ADMINISTRATION & BOX OFFICE MANAGER

Lisa Li
MANAGING DIRECTOR

Haanita Seval
DIRECTOR OF MARKETING

Madeline Sweetland
PUBLICITY & SOCIAL MEDIA MANAGER

Haley Vincent
ARTISTIC & OPERATIONS COORDINATOR

Production Staff:

Wayne Buss!
PRODUCTION MANAGER

Elana Honcharuk *
PROPS MASTER

Brenda McLean *
HEAD OF WARDROBE

Sean Neville
TECHNICAL DIRECTOR

Cari Simpson *
HEAD OF LIGHTS & SOUND

Steven Vande Vyvere *
HEAD CARPENTER

* operates under a contract with IATSE Local 63.

PTE BOARD OF DIRECTORS

Executive Members:

Melissa McAlister
PRESIDENT

Ryan Palmer
VICE-PRESIDENT

Ryan Segal
TREASURER

Jeff Palamar
SECRETARY

Jane Helbrecht
PAST-PRESIDENT

Jenny Wright
MEMBER-AT-LARGE

Directors:

Cassie Allen

Shyamala Dakshinamurti

Sowmya Dakshinamurti

Charles Huband

Sarah Luby

Gary Pachal

Tripat Pachu

Alanna Schmidt

Stirling Walkes

Foundation Trust:

Barb Gamey
CHAIR

Dave Angus

Larry Frostiak

Melissa McAlister

Ruth Simkin

The PTE Foundation Trust was established in 1987 to provide ongoing financial support to Prairie Theatre Exchange. The interest from the endowed funds is used each year to support new play development, as well as theatre education and outreach programs.

To donate an endowed gift to the foundation trust, and support the future of PTE, call Carman at 204-925-5263.

Prairie Theatre Exchange is a proud member of:



Prairie Theatre Exchange gratefully acknowledges the ongoing and generous support of:



Canada Council
for the Arts

Conseil des Arts
du Canada



WINNIPEG
ARTS COUNCIL



PRAIRIE | THEATRE | EXCHANGE
FOUNDATION TRUST
Ensuring a sustainable vision

Prairie Theatre Exchange is a not-for-profit theatre and an active member of the Professional Association of Canadian Theatres (PACT), and engages, under the terms of the Canadian Theatre Agreement, professional artists who are members of the Canadian Actors' Equity Association.

Does PTE have a special place in your heart?

It did for Ellen Hirst. She attended this theatre for years. And she chose to remember PTE in her will.

Her final donation, a bequest, was added to our endowment fund. Now every year the interest generated will go towards all the things that make PTE special. It will help:

- fund new play commissions like *The War Being Waged*.
- bring new, Canadian stories to life like *Places We Go*.
- bring magic to this stage through the amazing work of our artists in shows like *How the Heavens Go*.

Ellen's gift is a gift for everyone enjoying the stories PTE tells. We thank her for her generous spirit. We thank her for having a special place in her heart for PTE.

Debbie Patterson as *Mary*
in *How the Heavens Go*
by Joseph Aragon.

Photo by Leif Norman

If you have named PTE in your will or would like to learn how to do so, please contact Carman at 204-925-5263 or development@pte.mb.ca