

Outside Joke's

A whimsical illustration featuring a large, green and white striped sock as a central element. Several stylized characters are interacting with the sock: a woman in an orange dress is on the left, a man with glasses is on the right, and a couple is at the bottom right. A woman is also shown falling off the sock on the left. The sock has a green cuff at the top and a striped cuff at the bottom. The background is light blue with white snowflakes, blue musical notes, and pink hearts. The title 'Outside Joke's' is at the top, and 'Holiday Musical Extravaganza' is written on banners across the sock.

Holiday

Musical

Extravaganza



PRAIRIE
THEATRE
EXCHANGE

DEC 9 – 21, 2025

SPONSORED IN PART BY **Payworks**



| PTE.MB.CA

PRAIRIE THEATRE EXCHANGE IS PROUD TO PRESENT

Outside Joke's



Holiday Musical
Extravaganza

FEATURING:

PAUL DE GURSE
ANDREA DEL CAMPO *
CHADD HENDERSON
TOBY HUGHES *
ROBYN SLADE *
JANE TESTAR *

JANE BUTTNER *Stage Manager*
LEIF INGEBRIGTSEN *Musician in Waiting*

Outside Joke is adapting and performing on a set designed
by Joyce Licup for *Munsch Upon a Time*.

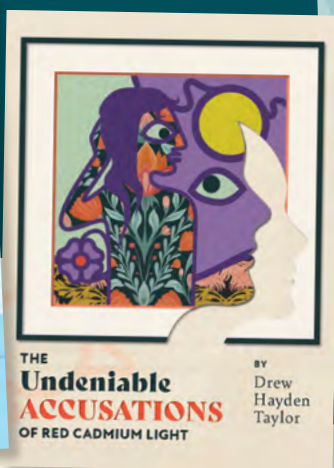
RUNNING TIME: TWO HOURS, ONE INTERMISSION

Audience Advisory: this theatrical run of improvised performances is very likely to contain strong language and adult storylines and is intended for mature audiences.

*The participation of these Artists is arranged by permission of Canadian Actors' Equity Association under the provisions of the Dance•Opera•Theatre Policy.

Prairie Theatre Exchange is a not-for-profit theatre and an active member of the Professional Association of Canadian Theatres (PACT), and engages, under the terms of the Canadian Theatre Agreement, professional artists who are members of the Canadian Actors' Equity Association.

Canadian Actors'
EQUITY
Association



SEE MORE THEATRE SAVE MORE MONEY!

There are three great shows left in the 2025-26 season that will entertain you all through the Winnipeg winter.

SUBSCRIBERS SAVE MONEY – tickets in a 3-Play Package range from only \$26 to \$44 each.



Photo: Matt Baram & Naomi Snieckus, BIG STUFF photo by Dahlia Katz

PLUS:

GET **FREE** HEATED,
UNDERGROUND
PARKING!

DID YOU KNOW

that subscribers get seats in the Premium + section for only \$44? That's a 30% discount from the usual \$63/seat in that section!

MORE INFO:



Meet the Artists



Paul De Gurse (he/him)

Paul is a Winnipeg-based musician. Recently, he was music director for the Canadian premiers of *Frozen* (Neptune Theatre) and *The Band's Visit* (Winnipeg Jewish Theatre), as well as the second production of the Winnipeg-born musical *Afterlight*. Paul is the Managing Director the Village Conservatory for Music Theatre, an arts education organization with a focus on creating new work located in Winnipeg. This show and all shows are for Tom.



Andrea del Campo (she/her)

Andrea is simply delighted to be continuing the Outside Joke/PTE love affair for the fifth season in a row! She is a Winnipeg-based performer, producer and intimacy coordinator with credits with every professional Winnipeg theatre company and many film and television productions. Andrea's 20+ years of performing with Outside Joke are among the most precious treasures of her life, and she feels incredibly lucky to spend so much time making jokes with her dear friends. Catch up with her at <http://www.andreadelcampo.com>.



Chadd Henderson (he/him)

Since the day he was hatched, Chadd Henderson has wanted to do but one thing: fly a dragon! Instead of lamenting the fact that this is impossible, he decided to become an improviser and accomplish his goal using imagination. And thus began a love affair between Chadd and the art of improvisation, which endures to this day.

We create and gather on Treaty 1 Territory, the traditional lands of the Anishinaabeg (Ojibway), Ininewuk (Swampy Cree), Anishinewuk (Oji-cree), Dakota Oyate, and Dene peoples, and the homeland of the Red River Metis. As we gather to tell stories today, we so appreciate the original storytellers and stewards of this land.

MUNSCH

UPON A TIME



BASED ON
THE STORIES BY

**Robert
Munsch**

ADAPTED BY

**Debbie
Patterson**



PRAIRIE
THEATRE
EXCHANGE



PTE.MB.CA

DEC 19, 2025 – JAN 3, 2026

Five Munsch stories brought to life.
A beloved PTE tradition returns!

Illustration: The Paper Bag Princess, copyright © 1980 Bob Munsch Enterprises Ltd. (text); © 1980 Michael Martchenko (art); published by Annick Press Ltd.

SPONSORED
IN PART BY:



Red River



CREDIT UNION

PAJAMA PARTY
SPONSORED BY:



winnipegkinsmen

Meet the Artists



Toby Hughes (he/him)

Toby's work doing improv has been some of the most creatively fulfilling art he has had the privilege of participating in. Toby wants to get better at dancing. Recent theatre credits include *Clue* at Royal Manitoba Theatre Centre and *Yaga* at the Warehouse (with RobYn!!). If Toby were an animal, he would be a tree and is so grateful to those who have nourished his roots and shone sunlight on his leaves. Also the birds that eat caterpillars out of his bark. This metaphor has gone too far.



RobYn Slade (she/her)

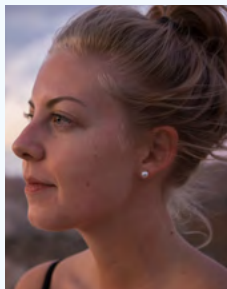
RobYn Slade is a Winnipeg-based actor and improviser. Select theatre credits include *The Gravitational Pull of Bernice Trimble*, *The Brink*, *MunschBusters!*, *How It Works*, and *Outside Joke's Christmas Miracle*, *A Christmas Carol: Big and Bigger Dickens Energy*, and *The Improvised Musical* (PTE); *Goodnight Desdemona* (*Good Morning Juliet*) (TPM); *Danny and the Deep Blue Sea* (The Keep Theatre); *Yaga*, *The Cottage*, *Steel Magnolias* (RMTC); *New Canadian Kid*, *IMPROVident* (MTYP). She is excited to be back at RMTC in the new year aboard Agatha Christie's *Murder on the Orient Express*. Wishing you and yours a flirty and flannelled holiday season!



Jane Testar (she/her)

Jane's first major acting role was Golde in *Fiddler on the Roof* at Kelvin High School alongside Chadd, Andrea, and Toby of *Outside Joke*. In the 21st century, Jane has had the good fortune of being part of *Outside Joke*, as well as the sketch comedy troupe *Hot Thespian Action*, and the *Fu Fu Chi Chi Choir*. She has appeared on stage in Theatre Projects Manitoba's *None of This Is Happening*, in French with PTE/Cercle Molière's *Que Faire d'Albert?*, in Noël Coward's *Private Lives* (RMTC), and *The Winter's Tale* with Shakespeare in the Ruins. She is also a frequent CBC Radio contributor and is currently the host of the CBC Comedy Factory Podcast.

Meet the Artists



Jane Buttner (she/her)
Stage Manager

Credits include: *The Wedding Party* (PTE); *Red Earth, I Dream of Diesel* (One Trunk Theatre/Theatre Projects Manitoba); *The Threepenny Opera* (Sick + Twisted/AA Battery); *Sargent + Victor + Me* (S+T/TPM); *A Short History of Crazy Bone* (TPM); *Romeo & Juliet*, *Antony & Cleopatra* (Shakespeare in the Ruins). Jane considers herself beyond lucky to work and play 'out west' during the summer months, where she and her partner enjoy very long walks and sleeping in the dirt. She is thrilled to spend another holiday season surrounded by family and friends, and grateful to once again work in a room filled with laughter and the good people of OJ and PTE.



Photo: Andrea del Campo & Taby Hughes, photo by Joey Senft

SEE IT ONCE, SEE IT AGAIN FOR UP TO HALF PRICE!*

That's right, OJ fans! It's a different show every performance - see it a second time for 25% off, a third time for 30% and four or more times for 50% off the regular price.

Call the Box Office for more info: 204-942-5483

* calculated on the regular seat price of your new ticket, not applicable on student/arts worker discounts, subject to availability

Meet the PTE Team

ADMINISTRATION STAFF

Laura Cyre

Front of House Supervisor

Evan Friesen

Patron Loyalty Manager

Ann Hodges

Artistic Director

Katie Inverarity

Managing Director

Carman Johnston

*Director of Development
& External Relations*

Cherry Karpyschin

General Manager Emeritus

Christine Kennedy

Manager of Finance & Administration

Lizabeth Kogan

Patron Services Manager

Michelle Lagassé

Front of House Supervisor

Aliah Maningas

Box Office

Lindcy Palacio

PTE Concierge

Denby Perez

Box Office Representative

Haanita Seval

Director of Marketing

Madeline Sweetland

*Manager of Social Media
& Digital Engagement*

Jane Testar

Front of House Supervisor

Bennette Villones

Box Office Representative

PRODUCTION STAFF

Wayne Buss!

Production Manager

Kate George*

Assistant Head of Wardrobe

Elana Honcharuk*

Head of Props

Brenda McLean*

Head of Wardrobe

Sean Neville

Technical Director

Cari Simpson*

Head of Lights & Sound

Steven Vande Vyvere*

Head Carpenter

PRODUCTION CREW

Shauna Jones*

Scenic Painter

Les Newman*

*Assistant Scenic
Painter*

Rowan Lundy*

Carpenter

Lovissa Wiens*

Buyer

** operates under a contract
with IATSE Local 63*

NOV 25 — DEC 28

ROYAL
MTC
MANITOBA THEATRE CENTRE



The Musical

BOOK BY
Thomas Meehan
and Bob Martin

MUSIC BY
Matthew Sklar

LYRICS BY
Chad Beguelin

Based upon the New Line Cinema film
written by David Berenbaum

Ryan Brown as Buddy. Photo by Jerry Grajewski.

★★★★★
“A wonderful
way to kick off the
holiday season.”

—AROUND THE TOWN
CHICAGO

Avoid disappointment,
get your tickets today!

RoyalMTC.ca

THE WINNIPEG JAZZ ORCHESTRA PRESENTS

A CHARLIE BROWN CHRISTMAS

60TH ANNIVERSARY CELEBRATION

DECEMBER 14 | 2025 | 2 PM & 7:30 PM | WINNIPEG ART GALLERY

Good grief! Charles Schultz's beloved animated feature turns 60. The WJO brings Vince Guaraldi's iconic sound-track back to the stage. Featuring actor/comedian Quinn Greene.

204.632.5299 | winnipegjazzorchestra.com



TICKETS



MANITOBA
ARTS COUNCIL

CONSEIL DES ARTS
DU MANITOBA



WINNIPEG
ARTS COUNCIL

THE
WINNIPEG
FOUNDATION
For Good. Forever.

WINNIPEG
CLASSIC 107

93.7
CJNU

PTE Board of Directors

EXECUTIVE MEMBERS:

Jeff Palamar

President

Ryan Palmer

Vice-President

Ryan Segal

Treasurer

Jenny Wright

Secretary

Melissa McAlister

Past President

DIRECTORS:

Nishu Brar

Shyamala Dakshinamurti

Sowmya Dakshinamurti

Carla Pelletier Gray

Tracy Hancocks

Pamela Hardman

Jade Laningham

Rochelle Ledoux Molgat

Stirling Walkes

FOUNDATION TRUST:

Christa Walkden – *Chair*

Larry Frostiak

Maria Grande

Jane Helbrecht

Jeff Palamar

Ruth Simkin

The PTE Foundation Trust was established in 1987 to provide ongoing financial support to Prairie Theatre Exchange. The interest from the endowed funds is used each year to support new play development, as well as theatre education and outreach programs.

To donate an endowed gift to the foundation trust, and support the future of PTE, call Carman at 204-925-5263.

Prairie Theatre Exchange gratefully acknowledges the ongoing and generous support of:



Canada Council
for the Arts

Conseil des Arts
du Canada



MANITOBA
ARTS COUNCIL

CONSEIL DES ARTS
DU MANITOBA



WINNIPEG
ARTS COUNCIL



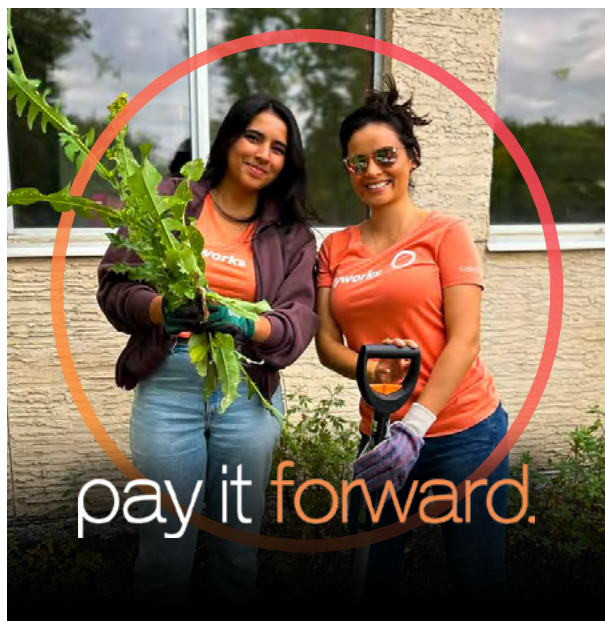
PRAIRIE THEATRE EXCHANGE
FOUNDATION
TRUST



Western Economic
Diversification Canada

Diversification de l'économie
de l'Ouest Canada

Canada



**Donating our
time is the most
rewarding way
we can spend it.**

Volunteerism is just one of
the ways we pay it forward
and fulfill our purpose of
Doing Right by People.

payworks.ca

Payworks



PTE.MB.CA

**PRAIRIE
THEATRE
EXCHANGE**

**PRESENTED BY
ECHO
THEATRE**

**FEB
8-9
2026**

STUFF
A BARAM AND SNECKUS PRODUCTION

Matt Baram & Naomi Snieckus
CO-CREATED & DIRECTED BY Kat Sandler

CO-CREATED & DIRECTED BY



PTE.MB.CA

JAN 20 – FEB 1, 2026

*A hilarious and heartfelt exploration
of the things we leave behind*